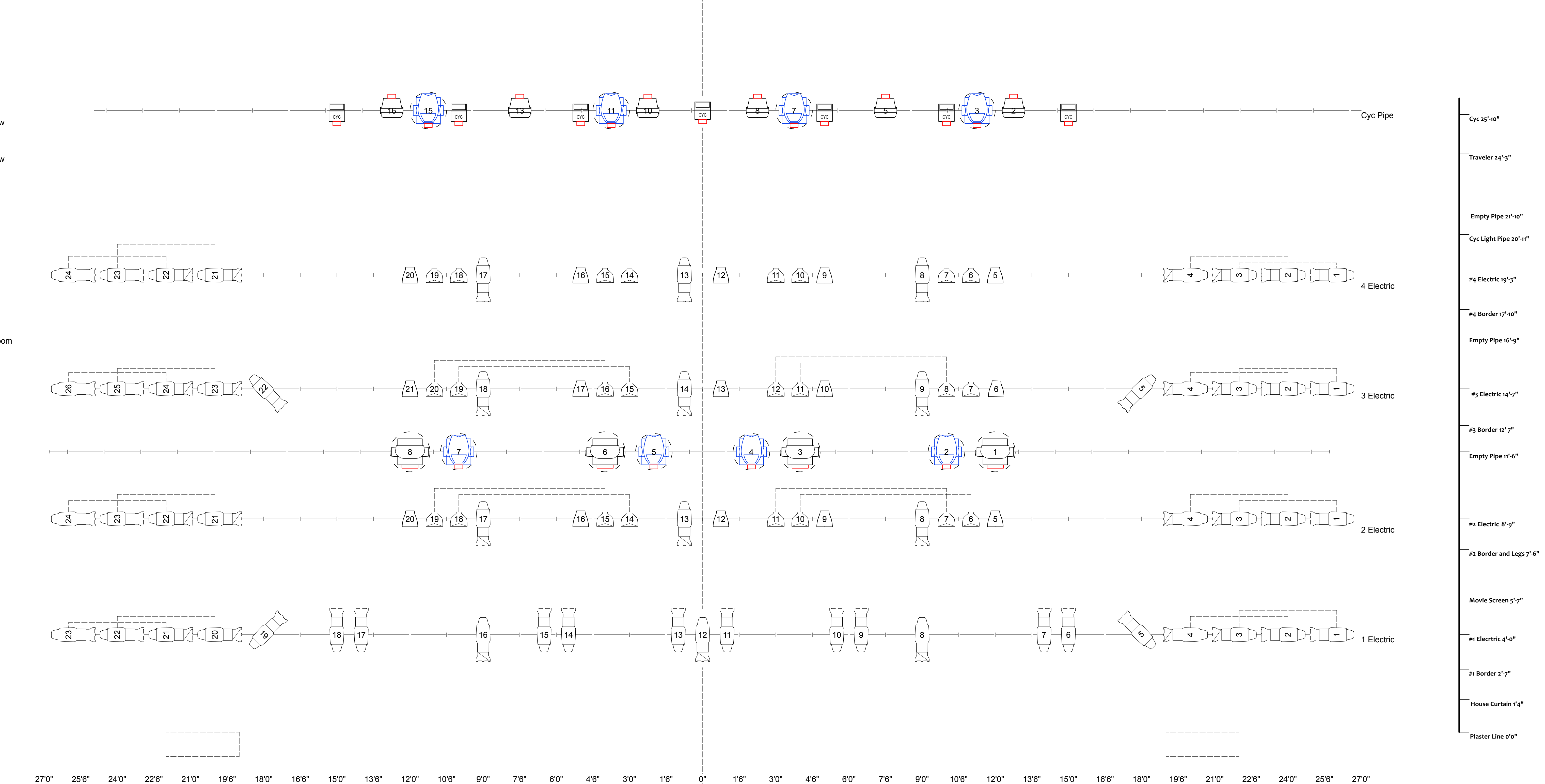
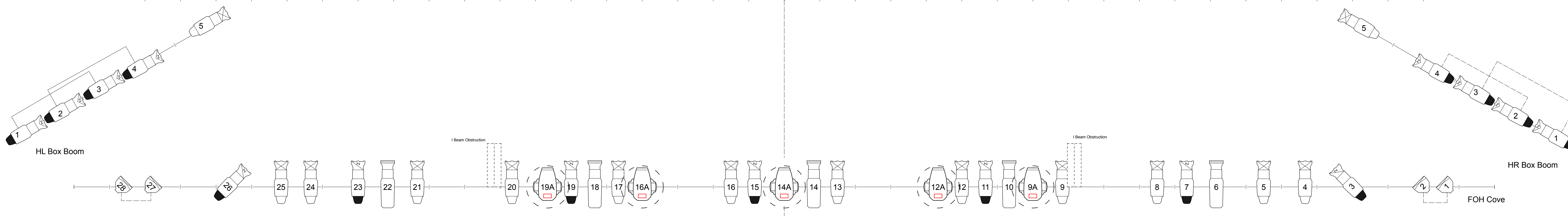



- ETC Source 4 36" 575w
- ETC Source 4 26" 575w
- ETC Source 4 19" 575w
- ETC Source 4 15-30 Zoom 575w
- ETC Source 4 25-50 Zoom 575w
- ETC Source 4 PAR VN5P 575W
- ETC Source 4 PAR WFL 575w
- ETC ColorSource LED Cyc 133w
- ETC ColorSource Indigo LED PAR
- ECT ColorSource Spot 15-30 Zoom
- Generic Wash Unit
- ADJ VIZI
- Diablo-S



- Cyc 25'-10"
- Traveler 24'-3"
- Empty Pipe 21'-10"
- Cyc Light Pipe 20'-11"
- #4 Electric 19'-3"
- #4 Border 17'-10"
- Empty Pipe 16'-9"
- #3 Electric 14'-7"
- #3 Border 12'-7"
- Empty Pipe 11'-6"
- #2 Electric 8'-9"
- #2 Border and Legs 7'-6"
- Movie Screen 5'-7"
- #1 Electric 4'-0"
- #1 Border 2'-7"
- House Curtain 1'-4"
- Plaster Line 0'-0"

27'0" 25'6" 24'0" 22'6" 21'0" 19'6" 18'0" 16'6" 15'0" 13'6" 12'0" 10'6" 9'0" 7'6" 6'0" 4'6" 3'0" 1'6" 0" 1'6" 3'0" 4'6" 6'0" 7'6" 9'0" 10'6" 12'0" 13'6" 15'0" 16'6" 18'0" 19'6" 21'0" 22'6" 24'0" 25'6" 27'0"



<p>Miller Center for the Arts At Reading Area Community College</p>		
<p>July 2024</p>		<p>1/2" = 1'0"</p>